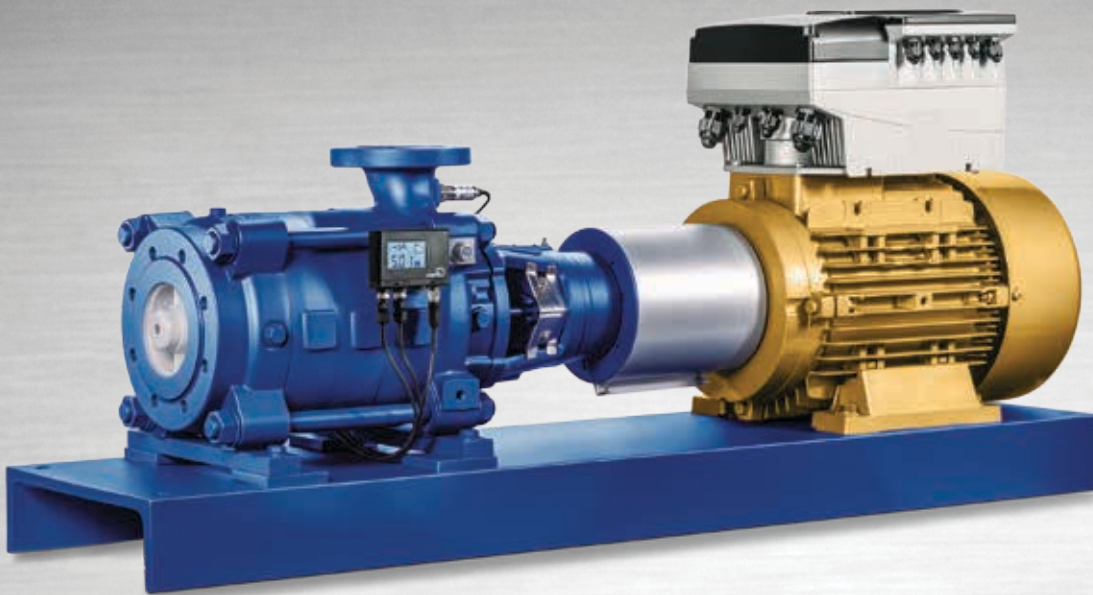


## Multitec – High-pressure Pump in Ring-section Design



### Applications:

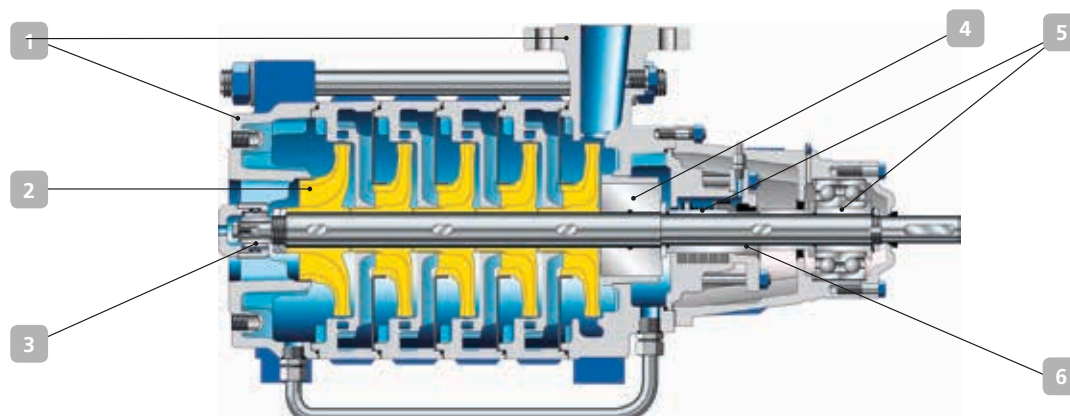
- Water supply
- Drinking water supply
- Pressure boosting
- Irrigation systems
- Fossil-fuelled power stations
- Hot water supply
- Condensate transport
- Boiler feed applications
- Heating systems
- Filtering systems
- Fire-fighting systems
- Snow-making systems
- Washing plants
- Industrial plants
- Desalination plants
- Geothermal plants
- Heat recovery systems

Multitec with KSB SuPremE® IE4\* motor, PumpDrive and PumpMeter

### More information:

[www.ksb.com/products](http://www.ksb.com/products)

# Multitec – High-pressure Pump in Ring-section Design



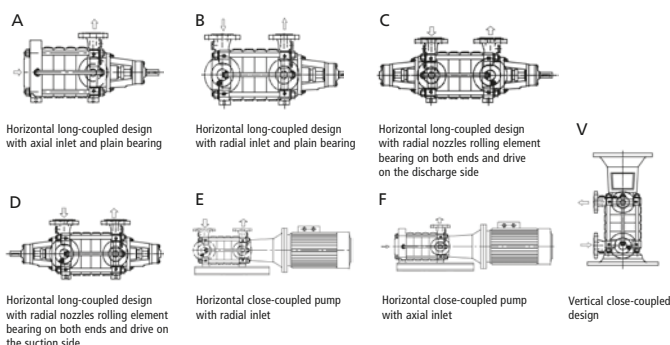
## Versatile and flexible pump

- 1 Suction and discharge nozzles can be adjusted to the system as needed, even on site.
- Large choice of designs, materials and shaft seals to adapt to the customer's project.

## High operating reliability

- 2 Special suction impeller designed for good performance and smooth running even under poor suction conditions or for handling fluids with low vapour pressure.
- 3 Wear-resistant, self-aligning plain bearing made of silicon carbide.
- 4 Axial thrust balancing ensured by balancing drum for a long service life.

## Designs



Technical data	Size: 32-250	
Flow rate	up to 1500 m <sup>3</sup> /h	6604 Usgpm
Discharge head	up to 1000 m	3280 ft
Pump discharge pressure	up to 100 bar	up to 1450 psi
Fluid temperature	-10 to + 200 °C	14 to 392 °F
Frequency	50 and 60 Hz, 2 and 4 poles	

The products illustrated as examples are partly fitted with options and accessories incurring a surcharge.

## Low operating costs

- Optimised hydraulic design and impellers trimmed to the duty point as a standard to ensure the system's high efficiency.
- KSB SuPremE® IE4\* synchronous reluctance motor, PumpMeter, as well as PumpDrive or PumpDrive R variable speed systems ensure optimal efficiency of the complete pump set and automatic adjustment to current demand, thus important energy savings are achieved.

## Service-friendly design, low spare parts costs

- 5 Easy dismantling of bearing and shaft seal without the need to remove hydraulic components thanks to separate seal chamber/bearing housing as well as shaft protecting sleeves at the bearing and shaft seal.
- 6 With some pump models, there is only one discharge-side seal. This reduces the costs for purchasing and storing spare parts.

## Other features

Flanges	DIN or drilled to ASME
Drive	direct by electric motor

## Materials

Cast iron	Bronze
Nodular cast iron (only for 200 and 250)	Cast steel
Duplex and super duplex stainless steel	Stainless steel

## Automation options

PumpDrive, PumpDrive R, KSB SuPremE® IE4\* motor, PumpMeter

\* IE4 acc. to IEC/CD 60034-30 Ed. 2



KSB Aktiengesellschaft  
Johann-Klein-Straße 9  
67227 Frankenthal (Germany)  
www.ksb.com